



ShIPLEY COLLEGE is committed to safeguarding and promoting the welfare of children, young people and adults and expects all staff to share this commitment. The College is actively committed to a policy of equality of opportunity for all through education and therefore encourages applications from all regardless of age, disability, economic status, gender, race, religion and beliefs or sexual orientation. Successful candidates will be required, where appropriate, to undergo a Disclosure and Barring Service (DBS) Disclosure Check.

Internal & External Job Opportunities

Health and Social Care Teacher - Further Education (FE)

Salary - £23,617 - £33,477 per annum (full time)

Closing Date 12 noon on Friday 24th September 2021

Interviews will be held on Friday 1st October 2021

Start date - November 2021

“It is the supreme art of the teacher to awaken joy in creative expression and knowledge” Albert Einstein

Ever considered a teaching career in Further Education (FE)?

Working in FE really makes a difference to the individuals you are teaching. All sorts of students come through the door of an FE college: the 16 year old who senses that it’s time to leave school; the adult facing unemployment who wants to retrain to find a job; the non-native speaker looking to master English; or the individual who wants to follow a vocation rather than take a degree. They all have an eye on their future and this role helps them achieve their goals.

People continue to need quality teaching throughout their lives and as a FE teacher you would work with a broad cross section of people of different ages, abilities and circumstances.

We are offering a new and exciting opportunity as a teacher at ShIPLEY COLLEGE, based in Saltaire, West Yorkshire.

How does a teacher role work?

As a Health & Social Care Tutor you will provide supervision of your curriculum area, ensuring that you meet budget, quality and operational targets. The post combines delivery of high quality, learner-focused education and providing a secure and friendly environment in order for your students to succeed. The role will include planning, leading and developing the curriculum area within the organisation to ensure compliance with the national curriculum framework, the integration of functional skills, best practice and quality targets

You must have:

- A full teaching qualification
- Hold a UK degree or equivalent professional qualification/experience
- Hold Level 2 in mathematics and English
- Complete a Satisfactory DBS (Disclosure and Barring Service) check
- Be eligible to work in the UK
- Be experienced in delivering **Health and Social and Science** programmes plus some experience of working within the **Healthcare industry in some capacity**- range of benefits available to all staff at Shipley College, including:
 - Wages £23,617 - £33477 per year (assumes full time working)
 - 40 days holidays per year (September to August) plus Bank Holidays (8) and College closure days (7)
 - Membership of the Teachers Pension Scheme
 - Access to a free gym on site
 - Reduced cost train travel

How to Apply

Application forms can be obtained from www.shipley.ac.uk

Completed applications should be submitted to jobs@shipley.ac.uk by 12 noon on the closing date of Friday 24th September.

Shipley College is an equal opportunities employer welcoming applications from all sections of the community.

Employment offers are subject to pre-employment checks including DBS, references and right to work.





Shipley College is a wonderful place to start your teaching career and we are delighted that you are considering completing an application for one of our teacher roles. We want people that can inspire students to make the most of their lives. As a teacher you will have some experience of the classroom.

Our practical, vocational and work-related courses are for students aged 16 or over and include Apprenticeships, full-time and part-time courses across a range of sectors. Your new job may find you working on all or some of these courses

We expect our teachers to form the backbone of our future workforce so are looking for the best candidates. We want you to be making the right step - for you and for us. Please contact us using the jobs@shipley.ac.uk if you want to arrange an informal call before applying.

Shipley College is a small, friendly place that really cares about every person that comes through the door and we pride ourselves on giving every student the individual support they deserve. Situated in the UNESCO World Heritage Site of Saltaire, it is a great place to study and easy to get to by bus, train and car. We have a fabulous team of colleagues whose dedication and attention to quality makes our College so successful. I am proud of the commitment and hard work of all the College's staff, students and governors and pleased that this was recognised by Ofsted in our latest inspection.

If you meet the criteria of the post advertised and feel that you would enjoy working here, we hope you will make an application to join us. You can download an application pack from our College website www.shipley.ac.uk or alternatively to request an application pack, please email jobs@shipley.ac.uk.

Completed application forms and equalities monitoring forms should be returned to jobs@shipley.ac.uk. We do ask that you accept that if you have not heard from us by the interview date that you will not have been selected for an interview on this occasion.

Nav Chohan, Principal



SHIPLEY COLLEGE'S MISSION STATEMENT

To provide the highest quality, inspirational education and training that exceeds the ambitions of individuals, businesses and communities.

OUR CORE VALUES

Culture of Collaboration and Partnership: A team working closely with our stakeholders in a spirit of trust and integrity

Aspiration and Professionalism: Striving for excellence in a safe, sustainable environment, while supporting all students to achieve their personal best and to progress to their next steps in work and life

Responsiveness: Meeting the needs and exceeding the expectations of students and employers, both locally and regionally, responding to government initiatives and our local community

Equality and Respect: Celebrating the diversity of our students and staff

98% of students agreed with the statement "I am happy with the College overall"

99% agreed with the statement "I am happy with the teaching on my course"



What our students say about Shipleigh College

'I would recommend apprenticeships at Shipleigh College, because the tutors support your ambitions!'

Katie - Business Administration
Apprentice

'I am now on the Level 3 Childcare course in my second year. I currently work at a nursery twice a week which was a little daunting at first but College prepares you for professional life'

Saif - Childcare

'I really enjoy it here and would highly recommend the College as an alternative to 6th form to anyone!'

Harry - Sport

'My class is so diverse with people of different ages, backgrounds and goals, but we all get on so well. I hope to go on to a career in Social Work as it's close to my heart'

Tabinda, - Access to Social
Sciences

'I started university however it was not for me and I felt I would prefer to be in an environment where I could learn on the job. My apprenticeship through Shipleigh College is a really good way to get hands on training and the qualifications to progress in IT. My team at work are really supportive and there are lots of opportunities to develop my skills and knowledge so that I can progress in the industry and become an IT Network Engineer.'

Callum - IT, Software, Web and Telecoms Professionals Intermediate
Level 2 Apprenticeship

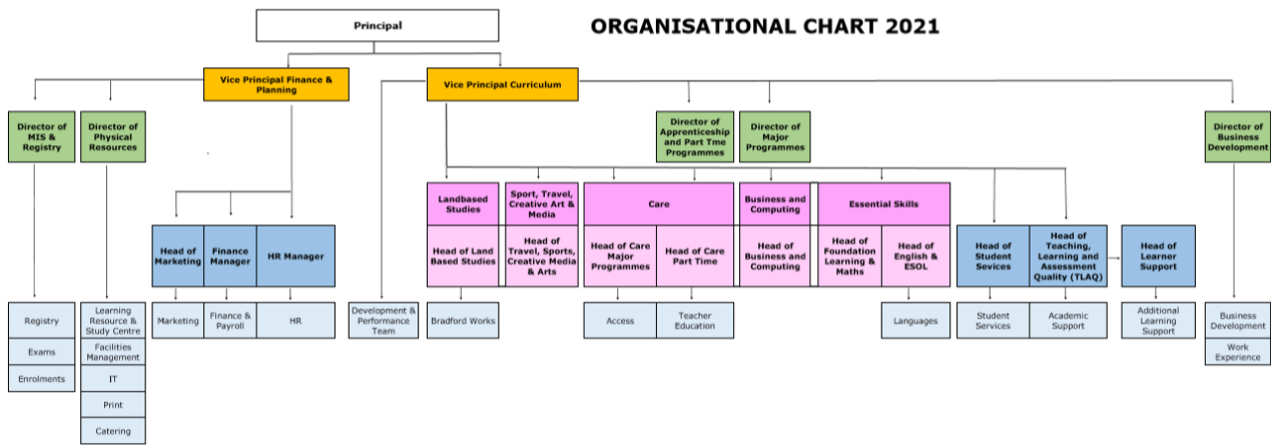
'I prefer a quieter, more tranquil environment when I'm studying so I can concentrate. I'm hoping my course will lead me to university to study Fashion or Graphic Design'

Junaid - Art & Design

'The course here has been excellent and has instilled me with the skills and knowledge to hopefully go on and secure a job or an apprenticeship'

Vanessa - Horticulture

Organisational Chart



JOB DESCRIPTION

Post Title:	Teacher in FE
Responsible to:	Head of Sector
Grade:	Lecturing Scale

INTRODUCTION

The following information is provided to assist staff joining the College to understand and appreciate the work content of their post and the role they are to play in the organisation. However, the following points should be noted:

- Whilst every endeavour has been made to outline all the duties and responsibilities of the post, a document such as this does not permit every item to be specified in detail. Broad headings therefore may have been used below, in which case all the usual associated routines are naturally included in the job description.
- Staff should not refuse to undertake work which is not specified on this form but they should record any additional duties they are required to perform and these will be taken into account when salaries are reviewed.
- Shipley College is an Equal Opportunities Employer and requires its employees to comply with all current equality policies in terms of equal opportunity for employment.
- Shipley College is committed, where possible, to make any necessary reasonable adjustments to the job role and the working environment that would enable access to employment opportunities for disabled job applicants or continued employment for any employee who develops a disabling condition.

PRIME OBJECTIVES OF THE POST

As a teacher you will be an outstanding classroom practitioner who consistently demonstrates the highest standards of delivery, is fully committed to inspiring students and acutely aware of the strategies required to achieve those highest standards within your subject area.

You may, from time to time, be required to undertake other duties commensurate with the grade and level of responsibility defined in this job description at the initial place of work or at other locations in the College catchment area.

DUTIES AND RESPONSIBILITIES

- To provide the highest quality teaching, learning and assessment to learners using the most appropriate and innovative methods whilst celebrating difference and promoting diversity
- To produce the highest quality learning and assessment materials and assignments and use the most up to date and appropriate resources to support learning and assessment
- To undertake formal assessment of learner achievement and offer clear and timely feedback on progress and opportunities for progression to learners
- To ensure the smooth running of courses, including timely and accurate completion of student attendance records, retention and achievement records, end of course information etc
- To maintain excellent classroom management and student discipline whilst observing College regulations
- To have well-developed strategies in place to keep learners safe and to support them to develop their own understanding of the risks in order to keep themselves and others safe
- To carry out a full evaluation of the course(s); maintain the course file, support the

effective use of satisfaction surveys, complete the course review documentation as required, and act upon recommendations for course improvement as part of the College quality system

- To establish, where appropriate, effective working relationships with examining and accrediting bodies, support correct registration and exam entries for learners on courses. To work with the Head of Teaching, Learning, Assessment Quality and follow the College's Internal Quality Assurance (IQA) systems for internal verification, external verifier and moderator visits and to undertake Internal Verification duties as required
- To assist the Head of Sector and team in the planning and costing of new programmes taking into account curriculum changes, labour market requirements and other relevant factors
- To contribute to curriculum development and establishing a culture of continuous improvement and innovation
- To provide learners with regular reports of progress and offer clear guidance on how to improve performance to reach their potential
- To advise the Head of Sector/budget holder on any required equipment and materials
- To maintain a current knowledge of the subject area, developments in further education and training, the regulations that apply to particular programmes and, where appropriate, industrial and commercial trends that may relate to education and training. To attend and take part in the College's half termly Quality Improvement (QI) days as part of this process.
- To attend Course Team, Sector and College meetings and external meetings appropriate to the post
- To represent the College on appropriate and agreed public occasions, such as recruitment events, and to promote the best interests of the institution by creating a positive impression of the College in the minds of potential clients
- To contribute to the marketing and promotion of courses in the Sector

GENERAL

- To demonstrate a positive commitment to the implementation of the College's Equality Diversity and Inclusion Policy and to the maintenance of a culture of continuous quality improvement and innovation.
- To be aware of the responsibilities under the provision of the Health and Safety at Work Act and the Control of Substances Hazardous to Health Regulations (COSHH) in terms of the post holder's own safety and the effects of their actions on colleagues, students and visitors.
- To be responsible for safeguarding and promoting the welfare of young learners and vulnerable adults the post-holder is responsible for or comes into contact with.
- To undertake mandatory training and staff development/CPD training as required by the nature of this post and the range of duties described within this job description.
- To use IT as designated appropriate to the nature of the role.
- To act in accordance with the College's expectations as set out in the Staff Code of Conduct and contract of employment.
- To undertake such other duties commensurate with the grade of the post as may reasonably be required.

PERSON SPECIFICATION

	ESSENTIAL	DESIRABLE
A L3 vocational qualification or higher in a related topic	✓	
A UK Degree and a teaching qualification	✓	
Previous teaching experience	✓	
Level 2 (equivalent) Qualification in Maths and English Language	✓	
Three years vocational experience	✓	
Excellent vocational knowledge	✓	
Excellent organisational skills	✓	
Ability to work as part of a team	✓	
Excellent communication skills	✓	
Ability to work under pressure	✓	
Knowledge and experience of Equality, Diversity and Safeguarding	✓	
Knowledge of additional educational needs		✓
Right to Work in the UK	✓	
Valid UK Driving Licence		✓