



WORK AT SHIPLEY COLLEGE

Science Teacher - Further Education

Hours: 35

Salary: Spine point 21-33, £23,617 - £33,477 pa FTE

Closing Date: Friday 10th December 2021 noon

Interview Date: TBA

The Role:

Shingley College is situated in the UNESCO World Heritage Site of Saltaire and is committed to high standards, encouraging staff and students to do their best and to aim high.

Do you have the necessary qualifications, skills and/or experience to deliver teaching, learning and assessment and contribute to the effectiveness and success within Health & Social Care.

This lecturing role includes, but is not limited to the following activities:

- Planning, preparing, teaching/delivering modules and supporting learning on a range of programmes up to level 3
- Course coordination; providing guidance, support and tutorship for learner groups which may include apprentices and others, while liaising with the wider course team.

You must have:

- A full teaching qualification
- Hold a UK degree or equivalent professional qualification/experience
- Hold Level 2 in mathematics and English
- Be experienced in delivering **Science** programmes plus some **Health and Social delivery** experience. Experience of working within the **Healthcare industry in some capacity** would be beneficial.

What we can offer you:

- Wages £23,617 - £33,477 per year (full time working)
- 40 days holidays per year (September to August) plus Bank Holidays (8) and College closure days (7)
- Membership of the Teachers Pension Scheme
- Access to a free gym on site
- Free on site parking
- Reduced cost train travel

How to Apply

Application forms can be obtained from www.shipley.ac.uk. Completed applications should be submitted to jobs@shipley.ac.uk



Although this is a full time role, there may be some flexibility in working hours.

Employment offers are subject to pre-employment checks including DBS, references and right to work. Shipley College is committed to safeguarding and promoting the welfare of children, young people and adults and expects all staff to share this commitment. The College is actively committed to a policy of equality of opportunity for all through education and therefore encourages applications from all regardless of age, disability, economic status, gender, race, religion and beliefs or sexual orientation.



Shipley College is a wonderful place to start your teaching career and we are delighted that you are considering completing an application for one of our teacher roles. We want people that can inspire students to make the most of their lives. As a teacher you will have some experience of the classroom.

Our practical, vocational and work-related courses are for students aged 16 or over and include Apprenticeships, full-time and part-time courses across a range of sectors. Your new job may find you working on all or some of these courses

We expect our teachers to form the backbone of our future workforce so are looking for the best candidates. We want you to be making the right step - for you and for us.

Shipley College is a small, friendly place that really cares about every person that comes through the door and we pride ourselves on giving every student the individual support they deserve. Situated in the UNESCO World Heritage Site of Saltaire, it is a great place to study and easy to get to by bus, train and car. We have a fabulous team of colleagues whose dedication and attention to quality makes our College so successful. I am proud of the commitment and hard work of all the College's staff, students and governors and pleased that this was recognised by Ofsted in our latest inspection.

If you meet the criteria of the post advertised and feel that you would enjoy working here, we hope you will make an application to join us. You can download an application pack from our College website www.shipley.ac.uk

Completed application forms and equalities monitoring forms should be returned to jobs@shipley.ac.uk. We do ask that you accept that if you have not heard from us by the interview date that you will not have been selected for an interview on this occasion.

Nav Chohan, Principal



SHIPLEY COLLEGE'S MISSION STATEMENT

To provide the highest quality, inspirational education and training that exceeds the ambitions of individuals, businesses and communities.

OUR CORE VALUES

Culture of Collaboration and Partnership: A team working closely with our stakeholders in a spirit of trust and integrity

Aspiration and Professionalism: Striving for excellence in a safe, sustainable environment, while supporting all students to achieve their personal best and to progress to their next steps in work and life

Responsiveness: Meeting the needs and exceeding the expectations of students and employers, both locally and regionally, responding to government initiatives and our local community

Equality and Respect: Celebrating the diversity of our students and staff

98% of students agreed with the statement "I am happy with the College overall"

99% agreed with the statement "I am happy with the teaching on my course"

WHAT OUR STUDENTS SAY

'My class is so diverse with people of different ages, backgrounds and goals, but we all get on so well. I hope to go on to a career in Social Work as it's close to my heart'

Tabinda, - Access to Social Sciences

'I would recommend apprenticeships at Shipley College, because the tutors support your ambitions!'

Katie - Business Admin Apprentice

'I really enjoy it here and would highly recommend the College as an alternative to 6th Form to anyone!'

Harry - Sport

'The course here has been excellent and has instilled me with the skills and knowledge to hopefully go on and secure a job or an apprenticeship'

Vanessa - Horticulture

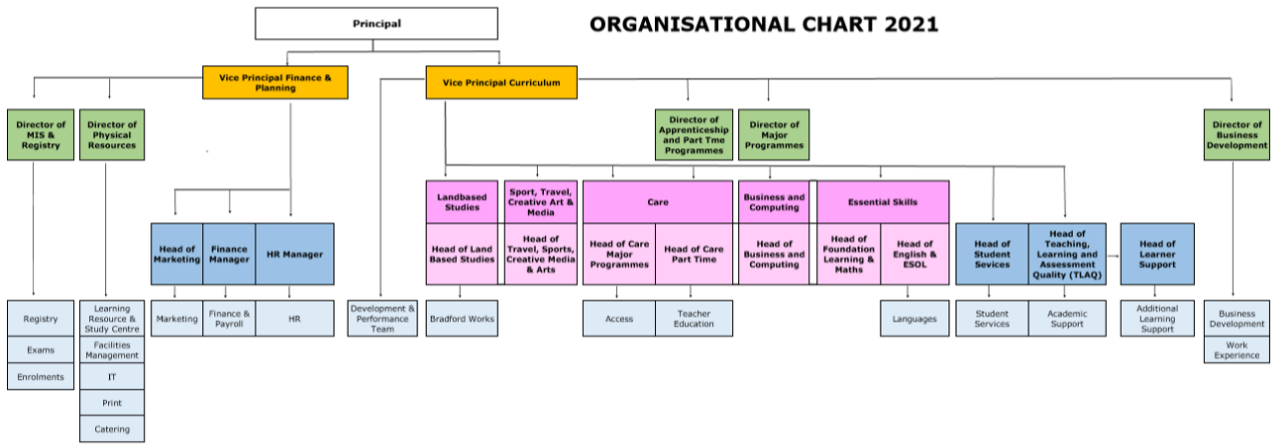
My apprenticeship through Shipley College was a really good way to get hands-on training and the qualifications to progress in IT. My team at work are really supportive and there are lots of opportunities to develop my skills and knowledge so that I can progress in the industry.

Callum - IT, Software, Web and Telecoms Professionals L2 Apprenticeship

'I am now on the Level 3 Childcare course in my second year. I currently work at a nursery twice a week which was a little daunting at first but College prepares you for professional life'

Saif - Childcare

ORGANISATIONAL CHART 2021



JOB DESCRIPTION

| | |
|-----------------|-----------------|
| Post Title: | Teacher in FE |
| Responsible to: | Head of Sector |
| Grade: | Lecturing Scale |

INTRODUCTION

The following information is provided to assist staff joining the College to understand and appreciate the work content of their post and the role they are to play in the organisation. However, the following points should be noted:

- Whilst every endeavour has been made to outline all the duties and responsibilities of the post, a document such as this does not permit every item to be specified in detail. Broad headings therefore may have been used below, in which case all the usual associated routines are naturally included in the job description.
- Staff should not refuse to undertake work which is not specified on this form but they should record any additional duties they are required to perform and these will be taken into account when salaries are reviewed.
- Shipley College is an Equal Opportunities Employer and requires its employees to comply with all current equality policies in terms of equal opportunity for employment.
- Shipley College is committed, where possible, to make any necessary reasonable adjustments to the job role and the working environment that would enable access to employment opportunities for disabled job applicants or continued employment for any employee who develops a disabling condition.

PRIME OBJECTIVES OF THE POST

As a teacher you will be an outstanding classroom practitioner who consistently demonstrates the highest standards of delivery, is fully committed to inspiring students and acutely aware of the strategies required to achieve those highest standards within your subject area.

You may, from time to time, be required to undertake other duties commensurate with the grade and level of responsibility defined in this job description at the initial place of work or at other locations in the College catchment area.

DUTIES AND RESPONSIBILITIES

- To provide the highest quality teaching, learning and assessment to learners using the most appropriate and innovative methods whilst celebrating difference and promoting diversity
- To produce the highest quality learning and assessment materials and assignments and use the most up to date and appropriate resources to support learning and assessment
- To undertake formal assessment of learner achievement and offer clear and timely feedback on progress and opportunities for progression to learners
- To ensure the smooth running of courses, including timely and accurate completion of student attendance records, retention and achievement records, end of course information etc
- To maintain excellent classroom management and student discipline whilst observing College regulations
- To have well-developed strategies in place to keep learners safe and to support them to develop their own understanding of the risks in order to keep themselves and others safe
- To carry out a full evaluation of the course(s); maintain the course file, support the

effective use of satisfaction surveys, complete the course review documentation as required, and act upon recommendations for course improvement as part of the College quality system

- To establish, where appropriate, effective working relationships with examining and accrediting bodies, support correct registration and exam entries for learners on courses. To work with the Head of Teaching, Learning, Assessment Quality and follow the College's Internal Quality Assurance (IQA) systems for internal verification, external verifier and moderator visits and to undertake Internal Verification duties as required
- To assist the Head of Sector and team in the planning and costing of new programmes taking into account curriculum changes, labour market requirements and other relevant factors
- To contribute to curriculum development and establishing a culture of continuous improvement and innovation
- To provide learners with regular reports of progress and offer clear guidance on how to improve performance to reach their potential
- To advise the Head of Sector/budget holder on any required equipment and materials
- To maintain a current knowledge of the subject area, developments in further education and training, the regulations that apply to particular programmes and, where appropriate, industrial and commercial trends that may relate to education and training. To attend and take part in the College's half termly Quality Improvement (QI) days as part of this process.
- To attend Course Team, Sector and College meetings and external meetings appropriate to the post
- To represent the College on appropriate and agreed public occasions, such as recruitment events, and to promote the best interests of the institution by creating a positive impression of the College in the minds of potential clients
- To contribute to the marketing and promotion of courses in the Sector

GENERAL

- To demonstrate a positive commitment to the implementation of the College's Equality Diversity and Inclusion Policy and to the maintenance of a culture of continuous quality improvement and innovation.
- To be aware of the responsibilities under the provision of the Health and Safety at Work Act and the Control of Substances Hazardous to Health Regulations (COSHH) in terms of the post holder's own safety and the effects of their actions on colleagues, students and visitors.
- To be responsible for safeguarding and promoting the welfare of young learners and vulnerable adults the post-holder is responsible for or comes into contact with.
- To undertake mandatory training and staff development/CPD training as required by the nature of this post and the range of duties described within this job description.
- To use IT as designated appropriate to the nature of the role.
- To act in accordance with the College's expectations as set out in the Staff Code of Conduct and contract of employment.
- To undertake such other duties commensurate with the grade of the post as may reasonably be required.

PERSON SPECIFICATION

| | ESSENTIAL | DESIRABLE |
|--|-----------|-----------|
| A L3 vocational qualification or higher in a related topic | ✓ | |
| A UK Degree and a teaching qualification | ✓ | |
| Previous teaching experience in Science/Health and Social Care | ✓ | |
| Level 2 (equivalent) Qualification in Maths and English Language | ✓ | |
| Three years vocational experience | ✓ | |
| Excellent vocational knowledge | ✓ | |
| Excellent organisational skills | ✓ | |
| Ability to work as part of a team | ✓ | |
| Excellent communication skills | ✓ | |
| Ability to work under pressure | ✓ | |
| Knowledge and experience of Equality, Diversity and Safeguarding | ✓ | |
| Knowledge of additional educational needs | | ✓ |
| Right to Work in the UK | ✓ | |
| Valid UK Driving Licence | | ✓ |